

CONTROL PANEL ACCESSORIES

NYLON CABLE TIES NON RELEASABLE CABLE TIES (HSN 39269080)

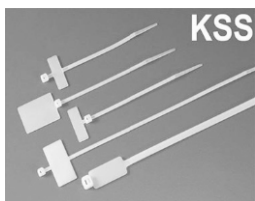
KSS

PRICE Rs Per 100 Nos.



CODE	WIDTH	LENGTH	NATURAL WHITE	BLACK
CV075K	2.5	75 MM	46.00	48.00
CV100K	2.5	100 MM	46.00	48.00
CV150K	3.6	150 MM	125.00	135.00
CV200	4.8	200 MM	240.00	250.00
CV250	4.8	250 MM	325.00	340.00
CV300	4.8	300 MM	370.00	390.00
CV368	4.8	368 MM	460.00	480.00
CV300	7.6	300 MM	665.00	700.00
CV380	7.6	380 MM	960.00	1000.00
CV450	4.7	450 MM	715.00	750.00
CV450	7.6	450 MM	1250.00	1315.00
CV550	7.6	550 MM	1850.00	1950.00
CV610	9.0	610 MM	2650.00	2800.00
CV762	9.0	762 MM	2800.00	2950.00
CV812	9.0	812 MM	3000.00	3150.00
CV1168	9.0	1168 MM	7300.00	...
CV1219	9.0	1219 MM	7700.00	...

RELEASABLE CABLE TIE (HSN 39269080)



CODE	WIDTH	LENGTH	PRICE Rs Per 100 Nos.
RCV100	3.6 MM	100 MM	175.00
RCV150	4.7 MM	150 MM	235.00
RCV200	4.7 MM	200 MM	300.00
RCV250	4.7 MM	250 MM	385.00
RCV 300	4.7 MM	300 MM	620.00

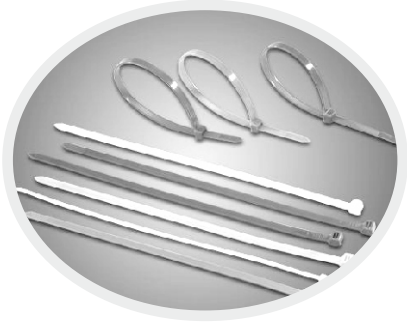
MARKER TIE (HSN 39269080)

CODE	WIDTH	LENGTH	PRICE Rs Per 100 Nos.
MCV100	2.5 MM	100 MM	140.00
MCV200	4.5 MM	200 MM	175.00

SS CABLE TIES (HSN 7326 / 9060)



DESCRIPTION	RATE (Per 100 Nos.)
150 X 4.8 mm	900.00
200 X 4.8 mm	1000.00
250 X 4.8 mm	1200.00
300 X 4.8 mm	1400.00
400 X 4.8 mm	1800.00

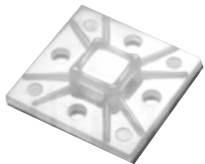


NYLON CABLE TIES
(HSN 39235090)

ELETTRO™
SURELOCK

10 % Extra for UV Resistant
Cable Ties - Black (Weather Resistant)

CAT No.	SIZE	RATE (Per 100 Nos.)	
		WHITE	BLACK
ET-100	100 X 2.5 mm	42.00	46.00
ET-150	150 X 3.6 mm	104.00	110.00
ET-200	200 X 3.6 mm	125.00	135.00
ET-200 S	200 X 4.8 mm	183.00	195.00
ET-250 S	250 X 4.8 mm	220.00	230.00
ET-300 S	300 X 4.8 mm	290.00	310.00
ET-300 H	300 X 7.6 mm	575.00	610.00
ET-350 S	350 X 4.8 mm	325.00	350.00
SLV ET-380 H	380 X 7.6 mm	1000.00	1050.00
ET-400 S	400 X 4.8 mm	415.00	440.00
ET-450	450 X 4.8 mm	440.00	460.00



SURELOCK
TIE MOUNT (HSN 8538900)

CODE	DESCRIPTION	PRICE Rs Per 100 Nos.
TM 19	19 X 19 (KP-160A)	200.00
TM 25	26 X 26 (KP-161A)	380.00

ELETTRO™

TAG (Market Tie) (HSN 39235090)



CODE	DESCRIPTION	PRICE Rs Per 100 Nos.
ET-T-100	100 X 2.5 mm	100.00



KRIPSON (HSN 8538900)
SELF ADHESIVE MOUNTS

CODE	WIDTH	LENGTH	PRICE Rs Per 100 Nos.
TS12	12 mm	12 mm	75
TS19	19 mm	19 mm	75
TS25	25 mm	25 mm	90

CABLE SUPPORTS (HSN 8538900)
SELF ADHESIVE

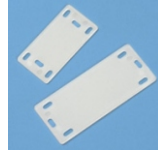


CODE	DESCRIPTION	PRICE Rs Per 100 Nos.
CF 25 X 25	FLAT CABLE SUPPORT	300
LS 20 X 30	LADDER SUPPORT	300

SELF ADHESIVE GASKETS
(HSN 392119090)



SHEET THICKNESS	PRICE Rs. PER METER					
	12 MM	15 MM	20 MM	25 MM	30 MM	40 MM
3 MM	4.30	4.60	5.80	8.00	10.00	12.70
5 MM	6.70	6.90	9.20	11.00	13.50	18.50



NON ADHESIVE TAPE
(COLOURS : R, Y, B, BK, & G) (HSN 3919090)

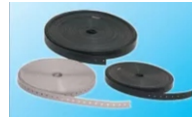


CODE	WIDTH	LENGTH	PRICE Rs Per ROLL
NA02	3/4" (19 mm)	25 MTRS.	53.00

PVC LACING CORD
COLOURS : GREY & BLACK (100 m) HSN 39162099



CODE	DESCRIPTION	PRICE Rs Per Roll
PLCO1	1 MM LACING CORD (HSN 3916)	80.00
PLCO2	BINDING WIRE (HSN 8544) (TWIST ON WIRE)	200.00



CABLE IDENTIFICATION TAG
USED WITH CABLE TIE (HSN 85389000)

CODE	SIZE	W X L	PRICE Rs Per 100 Nos.
CIT01	SMALL	20 X 45 MM	100.00
CIT02	MED	20 X 60 MM	125.00
CIT03	BIG	25 X 100 MM	350.00
CIT04	BIG	45 X 100 MM	620.00

BINDING STRAPS & BUTTONS
COLOURS : GREY & BLACK(HSN85389000)

CODE	DESCRIPTION	PRICE Rs
BSB8	BINDING BELT 8 MM 1 ROLL-10MTS	165.00 (5 ROLLS)
BNB8	BUTTONS 8 MM 1PKT-1000 NOS.	45.00

PVC STEEL WIRE REINFORCED HOSE PIPE (HSN 39172390)



INSIDE DIA. MM	OUTSIDE DIA. MM	PRICE Rs Per Mtr.
10	15	33.00
15	20	37.00
20	25	46.00
25	30	55.00
30	35	70.00
40	45	89.00
50	56	127.00

SURELOCK - Nylon Flexible Gromet
HSN : 85389000)



CODE	DESCRIPTION	PRICE Rs Per 100
GNF-2(KP-213A)	250 mm long flexible Gromet Strip	1040.00

SURELOCK - Cable Identification System HSN : 85389090



CODE	DESCRIPTION	PRICE Rs Per 100
CT-46 (KP-155)	20 X 46 mm	150.00
CT-61(KP-155A)	20 X 60 mm	200.00
CT-100 (KP-155G)	20 X 100 mm	500.00

SURELOCK - Cable Identification Carrier Strip HSN : 85389090



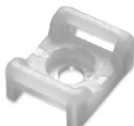
CODE	DESCRIPTION	PRICE Rs Per 100
CS-61	66 X 85 mm	185.00
CS-98	98 X 85 mm	240.00

PG TYPE PVC GLANDS
For reinforced Hose Pipes (HSN 39172390)



TYPE	SIZE (MM)	PRICE Rs Per Unit
PG-9	10	10.00
PG-13.5	15	12.00
PG-16	20	15.00
PG-21	25	20.00
PG-29	30	29.00
PG-40	40	38.00
PG-48	50	55.00

ELETTRO™
Screw type Tie Mount HSN : 39269099



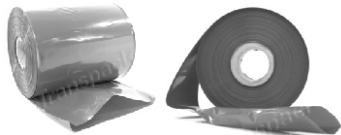
CODE	DESCRIPTION	PRICE Rs Per 100
ET-4(PA)	22.5 X 16 X 9.8 mm	360.00

CLOSED END CONNECTORS
(HSN 85369090)



DESCRIPTION	PRICE KSS	PRICE GIANTLOK
CE-2	250.00	200.00
CE-5	500.00	

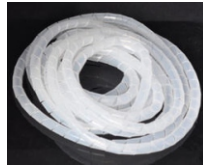
SFX LAY FLAT TUBING (HSS) (HSN 39172390)
 FOR BUS CARRYING CURRENT AT 500 V, 50 Hz, 2.5 KV
 DI-ELECTRIC STRENGTH. COLOURS : RED, YELLOW, GREEN, BLACK, BLUE.



SIZE	SUITABLE FOR BUS BARS SIZE IN MM.	PRICE PER METER
20 mm	12x3,9x6	10.00
25 mm	15x3,12x6	10.50
30 mm	20x3,16x6,16x3	11.00
35 mm	20x6,25x3	12.00
41 mm	26x6,25x9	14.00
48 mm	25x12,30x6,30x10	16.00
55 mm	36x6,30x12	18.00
61 mm	40x10,40x6,38x12,36x9	20.00
73 mm	50x6	24.00
81 mm	50x12,50x10	27.00
85 mm	60x6	28.00
93 mm	75x6	29.00
103 mm	75x12	36.00
110 mm	90x2,90x6	39.00
128 mm	100x9,100x6	45.00
140 mm	100x12	50.00
170 mm	125x10,125x6	49.00
190 mm	150x12,150x10,150x6	68.00
210 mm	175x12,175x10,175x6	78.00
230 mm	200x12	86.00



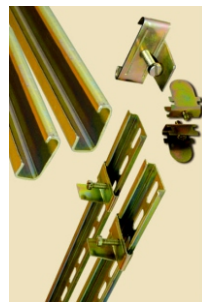
SPIRAL BAND TUBING (HSN 39172110)



CODE	SIZE (D)	COIL SIZE	PRICE Rs
SBT01	1/8" (3MM)	50 MET	150.00
SBT02	1/4" (6MM)	50 MET	240.00
SBT03	3/8" (9MM)	25 MET	240.00
SBT04	1/2" (12MM)	25 MET	355.00
SBT05	5/8" (16MM)	25 MET	615.00
SBT06	3/4" (19MM)	25 MET	910.00
SBT07	1" (25 MM)	25 MET	1280.00
SBT08	1 1/4"(32 MM)	25 MET	1750.00
SBT09	1 1/2"(38MM)	10 MET	1010.00

10% EXTRA FOR BLACK SPIRAL

M.S. CHANNELS & CLAMPS (HSN 85389000)



CODE	DESCRIPTION	PRICE Rs Per Piece
MCC1	CLIP ON CHANNEL 1 MM	190.00
MCCL	END CLAMP FOR TERMINAL CHANNEL	330.00
MC	MICRO CHANNEL 1 MM	65.00
MC-1	END CLAMP FOR MICRO CHANNEL	8.00
MC-3	END CLAMP FOR MCB CHANNEL	6.00
MC-4	MTG. CLAMP FOR TERMINAL CHANNEL	22.00
MC-5	MCB CHANNEL 1 MM	100.00
L.D		80.00

CABLE CLIPS (HSN 39178000)



SIZE	PRICE Rs Per 100 Pcs.
4 mm	22.00
5 mm	24.00
6 mm	30.00
7 mm	33.00
8 mm	39.00
9 mm	48.00
10 mm	53.00
12 mm	66.00
14 mm	99.00
16 mm	110.00
18 mm	143.00
20 mm	187.00
25 mm	220.00

NYLON 'P' CLIPS (HSN 85389000) NON ADJUSTABLE



CODE	MM	INCH	PRICE Rs Per 100 Nos.
NPC0	3.0	1/8"	45.00
NPC00	4.5	3/16"	50.00
NPC1	6.0	1/4"	60.00
NPC2	7.5	5/16"	70.00
NPC3	9.0	3/8"	100.00
NPC4	10.0	7/16"	110.00
NPC5	12.5	1/2"	125.00
NPC5A	15.0	5/8"	150.00
NPC6A	18.0	3/4"	180.00
NPC6	25.0	1" Ad.	350.00

STICKERS (HSN 39199010)



CODE	DESCRIPTION	PRICE Rs Per 100Pcs.
SIP4	3" X 1, 1/2" (75X35MM) 415/ 460 V DANGER	5.00
SIP5	4" X 4" (100X100MM) 415/ 460 V DANGER	8.00
SIP6	6" X 6" (150X150MM) 415/ 460 V DANGER	16.00
SIP7	3" X 1,1/2" ELECTRICAL SIGNAL	5.50
SIP9	SMALL ROUND EARTH 11 MM	100.00
SIP10	BIG ROUND EARTH 16 MM	110.00
SIP11A	OPEN DOOR LOCK 40X30 MM(YELLOW)	5.50
SIP14	BUSBAR CHAMBER	5.50
SIP15	CABLE CHAMBER	5.50
SIP17	TRIANGLE ARROW STICKER	8.00

NEUTRAL LINK (Disconnecting Type) (HSN 85389000)



CODE	DESCRIPTION	PRICE Rs Per Piece
ND01	15/30 AMPS	40.00
ND02	60 AMPS	100.00
ND03	100 AMPS	180.00

DOOR LOCKS (HSN 85389000)



CODE	DESCRIPTION	PRICE Rs Per Piece
DL01	15 MM HEIGHT	30.00
DL02	20 MM HEIGHT	32.00
DL03	25 MM HEIGHT	36.00
DL04	30 MM HEIGHT	40.00
DL05	35 MM HEIGHT	45.00
DK01	STANDARD KEY	24.00

BLIND PLUG (HSN 39269099)

(STOPPER FOR 22.5 MM HOLE)

COLOUR : BLACK



CODE	DESCRIPTION	PRICE Rs Per 100 Nos.
JSBL-01	STOPPER FOR 22.5 MM HOLE	6.00

ALUMINIUM INSCRIPTION PLATES (HSN 83100090)



CODE	DESCRIPTION	SIZE	PRICE Rs Per Piece
AIP01	ARROW	75X35 MM	16.00
AIP02	ALU. EARTHING PLATE M6 M12	33 X 16 MM 44 X 22 MM	6.00
AIP04	DANGER (6X6)	150X150MM	100.00
AIP05	DANGER (4X4)	100X100MM	52.00
AIP06	DANGER (3X1.5)	75X35MM	16.00
AIP07	DANGER (4X2)	100X50MM	36.00
AIP11	CABLE ALLEY	75X20MM	11.00
AIP12	BUSBAR	75X20MM	11.00
AIP13	BLANK	75X20MM	11.00
AIP14	TOGGLE SWITCH PLATE		12.00
AIP16	(ON-OFF) LEGEND PLATE 22.5 & 0.30 MM SIEMENS LEGEND START, STOP, ON, OFF, FORWARD, REVERSE, INCH, BLANK ETC. OFF, FORWARD.		8.00
AIP18	OPEN CLOSE YELLOW PLATE	(22.5MM)	13.00
NLP04	POLYAMIDE LEGEND PLATE (HSN 8538)	(22.5MM)	12.00
PIP20	EMERGENCY STOP PLATE (PLASTIC) (HSN 8538)	(22.5MM)	22.00

DOOR KNOBS (HSN 85389000)



CODE	DESCRIPTION	PRICE Rs Per Piece
SHK01	1/4" X 28 MM	9.00
SHK02	1/4" X 35 MM	10.00
SHK03	1/4" X 45 MM	11.00
SHK04	3/16" X 25 MM	7.50
SHK05	4 MM X 25 MM	7.50
SHK06	6 X 25/28 MM	8.50
SHK07	6 X 35 MM	9.00
SHK08	6 X 45 MM	16.00
LCK01	8 X 20 MM	20.00
LCK02	8 X 25 MM	20.00

BAKELITE BUS BAR SUPPORTS (HSN 85469090)



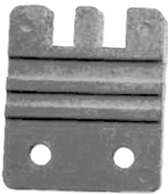
CODE	DESCRIPTION	PRICE Rs Per Piece
BBS01	CENTRE NUT BOLT M8	15.00
BBS02	MOULDED NUT M8	25.00

EPOXY / DMC INSULATOR (HSN 85469090)



CODE	HEIGHT X DIAMETER	INSERT	PRICE Rs Per Piece
EBS01	30 X 30 MM	M6	15.00
EBS02	30 X 30 MM	M8	18.00
EBS03	40 X 40 MM	M8	27.00
EBS04	40 X 40 MM	M10	35.00
EBS05	50 X 50 MM	M10	44.00
EBS06	60 X 50 MM	M12	88.00
EBS07	70 X 50 MM	M12	100.00
EBS08	80 X 55 MM	M12	115.00

FINGER TYPE BUSBAR SUPPORTS (HSN 85469090)



CODE	DESCRIPTION	PRICE Rs Per Piece
FBS1	M6 X 1 GROUVE	25.00
FBS2	M6 X 2 GROUVE	28.00
FBS3	M6 X 3 GROUVE	51.00
FBS4	M6 X 4 GROUVE	61.00
FBS5	M10 X 1 GROUVE	25.00
FBS6	M10 X 2 GROUVE	28.00
FBS7	M10 X 3 GROUVE	51.00
FBS8	M10 X 4 GROUVE	61.00
FBS9	M12 X 1 GROUVE	25.00
FBS10	M12 X 2 GROUVE	28.00
FBS11	M12 X 3 GROUVE	51.00
FBS12	M12 X 4 GROUVE	61.00

PVC/ RUBBER GROMMET & CLOSURE (HSN 85389000)



CODE	HOLE SIZE	MM	PRICE Rs Per 100 Nos.
Rc01	1/4"	6-7 MM	63.00
RC02	3/8"	9-1 MM	66.00
RC03	1/2"	12-13 MM	80.00
RC04	5/8"	15-16 MM	90.00
RC05	3/4"	19-20 MM	135.00
RC06	7/8"	22-23 MM	160.00
RC07	1"	25-26 MM	180.00
RG08	1 1/4" Gro	30-31 MM	240.00
RC08	1 1/4" Clo	30-11 MM	240.00
RG09	1 1/2" Gro	37-38 MM	310.00
RC09	1 1/2" Clo	37-38 MM	310.00
RG11	2" Gro	50-51 MM	420.00
RC11	2" Clo	50-51 MM	520.00
RG12	2 1/4" Gro	56-57 MM	800.00
RC12	2 1/4" Clo	56-57 MM	800.00
RG14	2 1/2" Gro	61-62 MM	850.00
RC14	2 1/2" Clo	61-62 MM	850.00
RG16	3" Gro	69-70 MM	900.00
RC15	3" Clo	69-70 MM	900.00

L - SUPPORT (DMC) (HSN 85469090)



LENGTH	PRICE Rs Per Piece
L 60	24.00
L85	27.00
L105	31.00
L125	35.00
L150	42.00
L175	66.00

POWER BLOCK CONNECTORS (HSN 85469090)



TPN-0	1/4" X 4 WAY	30AMP	44.00
TP -1	1/4" X 3 WAY	60 AMP	44.00
TPN -1	1/4" X 4 WAY	60 AMP	51.00
TP -2	5/16" X 3 WAY	100 AMP	88.00
TPN-2	5/16" X 4 WAY	100 AMP	100.00
TPN-3	5/16" X 4 WAY	200 AMP	242.00

SINGLE BUS BAR SUPPORT (DMC) (HSN 85469090)



SP 30	10.00	SP 35	27.00
SP 30 Bolt	20.00	SP 50	88.00

MEDIUM VOLTAGE INSULATOR (DMC) (HSN 85469090)



CODE	KV	DIA. (MM)	HEIGHT (MM)	PRICE Rs Per Piece
MV-75X130	11	75	130	600.00
MV-60X130	11	60	130	550.00
MV-60X90	6.6	60	90	360.00
MV-60X75	3.3	60	75	330.00

EARTHING INSULATORS (HSN 85469090)



CAT NO.	DESCRIPTION	PRICE
ESC 253	25 X 3 mm	33.00
ESC 256	25 X 6 mm	35.00
ESC 506	50 X 6 mm	53.00

METER GLASS (HSN 85381010)



CAT NO.	DESCRIPTION	PRICE
APA 02	METER GLASS 96X96 MM (SCREW IN TYPE)	35
APA 03	METER GLASS 96X96 MM (SNAP FIT TYPE)	60

OPEN / CLOSED HOLE PLUG-SNAPTYPE (HSN 85389000)



CODE	HOLE DIAMETER	PRICE Rs Per 100 Nos.
SC 1	3/8"	90.00
SC 2	1/2 "	95.00
SC 3	5/8"	110.00
SC 4	3/4"	120.00
SC 5	7/8"	130.00
SC 6	1"	175.00
SC 7	1 1/4"	220.00
SC 8	1 1/2"	260.00
SC 9	2"	350.00

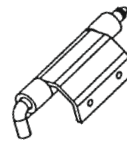
PANEL LOCKS (HSN 85389000)

SINGLE LEVER / CAM LOCKS

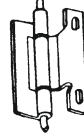


CAT NO.	DESCRIPTION	PRICE
ALS1-16	FULL METAL DIE CAST LOCK -18 mm	44
ALS1-45	FULL METAL DIE CAST LOCK - 45 mm	46
ALS1	FULL METAL DIE CAST LOCK 20/25/30 mm (ROUND INSERT)	42
ALS1	FULL METAL DIE CAST LOCK 20/25/30 mm (SQUARE / TRIANGLE INSERT)	44
ALS4	POLYAMIDE LOCKS (NYLON BARREL & INSERT)	38
ALS51	POLYAMIDE LOCKS WITH METAL LEVER	49
ALR22	SMALL GODREJ LOCK WITH KEY 16 mm	51
ALS67	WING LOCK WITH POLYAMIDE KNOB INSERT & METAL LEVER	53
ALS20	DIE-CAST PUSH TO OPEN LOCK	240
ALR21	STEEL LOCK WITH GODREJ KEY	68
ALR25	SMALL LOCK SCREW DRIVER TYPE DIE CAST	49
JSSL-01	QUICK FIXING SLIDING PANEL LOCK-ECONOMY	19

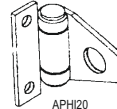
HINGES (HSN 85389000)



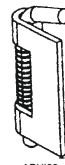
APHI18



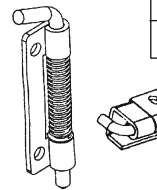
APHI19



APHI20



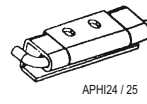
APHI21



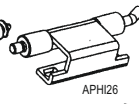
APHI22



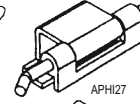
APHI23



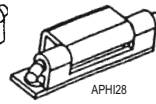
APHI24 / 25



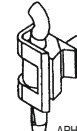
APHI26



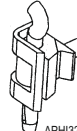
APHI27



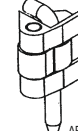
APHI28



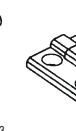
APHI29



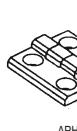
APHI31



APHI32



APHI33



APHI36 / 37

CAT NO.	DESCRIPTION	PRICE Rs.
APHI18	MS CONCEALED TYPE HINGES WITH 20 MM BENDING	40
APHI19	MS CONCEALED TYPE HINGES WITH 26 MM BENDING	42
APHI20	MS STANDARD TYPE HINGES	40
APHI22	SPRING PIN HINGE	25
APHI23	SPRING PIN HINGES SCREW TYPE L / R	25
APHI24	120° CONCEALED HINGES 60 MM WIDTH	44
APHI25	120° CONCEALED HINGES 90 MM WIDTH	60
APHI26	CONCEALED HINGE 15 MM DOOR FOLD	40
APHI27	CONCEALED HINGE 20 MM DOOR FOLD	36
APHI28	120° CONCEALED HINGES 66 X 20 MM	41
APHI29	CONCEALED HINGES 66 X 20 MM	36
APHI31	180 HINGES FOR SINGLE CABINETS 26 MM	24
APHI32	180 HINGES FOR SINGLE CABINETS 30 MM	26
APHI33	180 HINGES FOR SINGLE CABINETS WITH EXTERNAL PIN	35
APHI36	SCREW ON HINGES 50 MM	23
APHI37	SCREW ON HINGES 25 MM	18

KEYS



ALK01



ALK02



ALK03



ALK04



ALK05

CAT NO.	DESCRIPTION	PRICE Rs.
ALK01	DIE CAST ROUND	28
ALK02	DIE CAST SQUARE	33
ALK03	DIE CAST TRIANGLE	33
ALK04	STANDARD PLASTIC KEY (ROUND)	22
ALK05	PLASTIC KEY (TRIANGLE / SQUARE)	22
K-1-MK	MULTI-PURPOSE KEY	200

DOOR HINGES

(HSN 85389000)



CODE	DIAMETER X LENGTH	PRICE Rs Per Piece
DH2	10X45 MM	12.00
DH3	12X52 MM	14.00
DHS	SIEMENS TYPE (U HINGE, Q PIN & BUSH)	18.00
NH08	Heavy Siemens Hinges	22.00

CASTLE LOCK



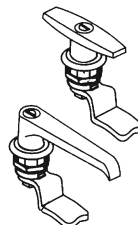
CA-L	CASTLE LOCK (DIGITS A, B, C, D & E)	600
CA-K	KEY FOR CASTLE LOCK (CL01)	300

THREE POINT LOCK SYSTEMS



		With Rod	Without Rod
NLP04	WITH 2 BRASS KEYS	800	600
ALLO3	3 POINT FLAT LOCK WITH RACHET	900	700

ZINC DIE CAST HANDLES (HSN 85389000)



DESCRIPTION	PRICE
ZINC DIE CAST PANEL L-- HANDLE WITH KEY	250
ZINC DIE CAST PANEL L-- HANDLE W/O KEY	250
ZINC DIE CAST PANEL T-- HANDLE WITH KEY	250
ZINC DIE CAST PANEL T-- HANDLE W/O KEY	225

CANOPY LOCK



CODE	DESCRIPTION	PRICE Rs Per Piece
JS-29	CANOPY LOCK EXCLUSIVE	400
JS-30	CANOPY LOCK FULL SS	550
JS-31	CANOPY LOCK WITH STUD	450

B TYPE			C TYPE			
SIZE H X W mm	RATE / MTR.	MTRS/BOX	H X W	RATE / MTR.	2MTR	1MTR
15 X 15	81.00	200	25 X 25	117.00	70	100
25 X 25	110.00	100	30 X 25	130.00	70	100
30 X 25	117.00	100	40 X 25	148.00	50	100
			40 X 40	197.00	60	100
45 X 25	161.00	100	45 X 25	164.00	70	100
40 X 30	151.00	100	45 X 45	215.00	60	80
45 X 45	198.00	100	60 X 25	196.00	60	100
45 X 30	158.00	80	60 X 40	223.00	50	80
			60 X 60	286.00	40	50
45 X 60	222.00	60	60 X 80	393.00	30	40
60 X 25	178.00	80	80 X 25	258.00	50	80
60 X 45	222.00	60	80 X 40	300.00	50	50
60 X 60	267.00	50	80 X 60	390.00	30	40
			80 X 80	490.00	30	35
75 X 25	267.00	80	80 X 100	600.00	20	30
75 X 45	278.00	50.	100 X 25	380.00	50	50
75 X 60	300.00	40.	100 X 40	395.00	36	50
75 X 75	430.00	35	100 X 60	525.00	24	40
			100 X 80	620.00	20	30
100 X 75	516.00	25	100 X 100	830.00	16	20
100 X 100	770.00	20.	100 X 150	1190.00	10	10

TRUNKING PRICE LIST

SR NO	SIZE / W X H	RATE PER 2 MTR	MAKE	STD. PACKL NG PCS
1	50 X 50	520.00	SFX	45
2	75 X 50	980.00	SFX	25
3	75 X 75	1150.00	SFX	18
4	100 X 50	1300.00	SFX	20
5	100 X 50	950.00	SGI	24
6	150 X 50	2700.00	SGI	12

B TYPE

SR NO	SIZE	RS / PER MTR
1	25 MM	75.00
2	30 MM	77.00
3	45 MM	100.00
4	60 MM	150.00
5	75 MM	180.00
6	100 MM	205.00

C TYPE

SR NO	SIZE	RS / PER MTR
1	25 MM	73.00
2	40 MM	100.00
3	60 MM	150.00
4	80 MM	175.00
5	100 MM	205.00



SOLDERING IRON

HSN 85151100

CAT No.	Description	Price
STC / 325 / TP	25 W with sealed element, 3 Core Cable with Plug	330.00
STC / 335 / TP	35 W with sealed element, 3 Core Cable with Plug	390.00
STC / 350 / TP	50 W with sealed element, 3 Core Cable with Plug	460.00
STC / 306	50 W Round element, 3 Core Cable with Plug	270.00
STC / 831	65 W Cool Handle Round Element 3 Core Cable with Plug	470.00
STC / 501	65 W Deluxe Pencil Bit	410.00
STC / 710	125 W Deluxe Pencil	680.00
STC / 717	125 W Round Element 3 Core Wire with Plug, Oval Bit	570.00
STC / 951	150 W Deluxe Pencil	820.00
STC / 1260	240 W Deluxe Pencil	1400.00
STC / 1421	500 W Deluxe Pencil	2000.00
STC / 1441	1000 W Deluxe Pencil	3800.00



POLYOLEFIN HEAT SHRINK SLEEVES (HSN 85469010)

SHRINKAGE 50% - OP. TEMP. 120°C
COLOUR BLACK (RATIO 2 : 1) MAKE : WOER



CODE	SIZE	LENGTH (MTRS.)	PRICE Rs PER MTR.
PHS1	1 MM	200	3.50
PHS 1.5	1.5 MM	200	4.00
PHS 2	2 MM	200	4.60
PHS 2.5	2.5 MM	200	6.00
PHS 3	3 MM	200	6.70
PHS 3.5	3.5 MM	200	7.30
PHS 4	4 MM	200	8.70
PHS 5	5 MM	100	11.50
PHS 6	6 MM	100	13.50
PHS 7	7 MM	100	12.40
PHS 8	8 MM	100	13.40
PHS 9	9 MM	100	14.70
PHS 10	10 MM	100	16.00

CODE	SIZE	LENGTH (MTRS.)	PRICE Rs PER MTR.
PHS 12	12 MM	100	18.50
PHS 14	14 MM	100	23.00
PHS 15	15 MM	100	26.00
PHS 16	16 MM	100	30.00
PHS 17	17 MM	100	35.00
PHS 18	18 MM	100	40.00
PHS 20	20 MM	100	50.00
PHS 22	22 MM	100	60.00
PHS 25	25 MM	50	70.00
PHS 30	30 MM	50	90.00
PHS 35	35 MM	50	110.00
PHS 40	40 MM	50	120.00
PHS 50	50 MM	50*	145.00

* For Colour & Transparent - 20% Extra

Description	Price Rs.
2 Arm	1650.00
3 Arm	1900.00
4 Arm	2200.00



**MACHINE
AMP
HSN 94051090)**

ACCESSORIES

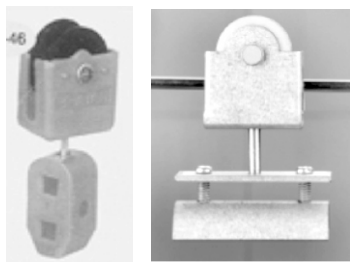
DESCRIPTION	RATE PER PIECE
H. T. Tape (Six Rolls Tin Pack) (HSN 85462040)	350.00
C.R.C. Spray (Belgium) 500 ml (HSN 34031900)	550.00
Rubber Hand Gloves 11 kV (Crystal Make) (HSN 40151900)	750.00
Rubber Hand Gloves 22 kV (Crystal Make) (HSN 40151900)	1050.00
Rubber Hand Gloves 33 kV (Crystal Make) (HSN 40151900)	1400.00
Shock Treatment Coloured Laminated Paper Chart (HSN 490599)	220.00

EGO CABLE CUTTER (HSN 85151100)

Cat. No.	Description	Price Rs.
CC-200	Wire Cutter upto 10 Sq.mm.	170.00
150-B	Wire Cutter	60.00
Royal-06	Wire Cutter upto 1.5 sq.mm.	125.00
68-C	Wire Stripper & Cutter	65.00



**CABLE CARRIER
(HSN 84251110)**



Description	Size	Price
SRPA-01 (Small)	7 mm to 10 mm	60.00
SRPA-02 (Medium)	7 mm to 12 mm	80.00
SRPA-03 (Big)	16 mm to 20 mm	100.00
C Rail Festoon System Full Plastic Carrier		150.00
Cable Carrier Trolley 15 mm Wire Rope Powder Coated		110.00
Beam Powder Coated Trolley	50 mm to 75 mm	1050.00

Description	Price	
AS PER ISI	11 KV : 6 mm - 2 Mtr X 1 Mtr	1200.00
	22 KV : 10 mm - 2 Mtr X 1 Mtr	2000.00
	33 KV : 12 mm - 2 Mtr X 1 Mtr	2500.00
ISI MARKED	1.1 KV : 2 mm - 2 Mtr X 1 Mtr Class A	3500.00
	2.2 KV : 2.5 mm - 2 Mtr X 1 Mtr Class B	4000.00
	3.3 KV : 3 mm - 2 Mtr X 1 Mtr Class C	5000.00

RUBBER MAT



HSN 40169100

IS : 1S652 = 2006
HSN 3918

Size	Length	Suitable for Wire Size	Price
2.2 mm	100 m	0.5 mm	320.00
2.5 mm	100 m	0.75 mm	345.00
3.0 mm	100 m	1 - 1.5 mm	405.00
3.2 mm	100 m	1 - 1.5 mm	450.00
3.5 mm	100 m	2.5 mm	510.00
4.0 mm	100 m	2.5 - 4 mm	564.00
4.2 mm	100 m	4 mm	600.00
4.5 mm	100 m	4 mm	630.00
5.0 mm	100 m	4 - 6 mm	745.00
5.2 mm	100 m	6 mm	800.00
5.5 mm	100 m	6 mm	850.00
6.0 mm	100 m	6-10 mm	1010.00



**FERRULE
MARKING
SLEEVE
(HSN 39173100)**



**MULTIMETER CORDS
(HSN 90309010)**



Cat. No.	Description	Price Rs.
TP-1	One end 2 mm moulded pin Other end 4 mm moulded pin	100.00
TP-2	One end 2 mm moulded pin Other end 4 mm / RA sheathed moulded pin	120.00
TP-9	One end 2 mm moulded pin Other end 4 mm R/A moulded pin	100.00
TP-7	One end 4 mm moulded pin Other end crocodile clip	160.00
KH-9	Heavy Duty Cord	170.00
TP-8	One End Crocodile Clip Other End U Shape Soldered Spade Pin	190.00

HEXPRESS A-6



Capacity : 1.5 mm² to 6 mm²
 Weight : 340 gms
 Price Rs.: 700.00

HEXPRESS B-16



Capacity : 1.5 mm² to 16 mm²
 Weight : 600 gms
 Price Rs.: 980.00

HEXPRESS - 15

Ratcheting Cable Cutter with Adjustable Handle for ACSR Armoured Cu & Al Cable



Not for Cutting Stressed Steel Wire
 Capacity : Upto 400 mm²
 Weight : 1.800 kg
 Price Rs. :17000.00

HEXPRESS - 06

Heavy Duty - Hydraulic Hand Operated



Capacity : 16 mm² to 300 mm²
 Weight : 5.317 kg
 Price Rs.: 6500.00

HEXPRESS - 08

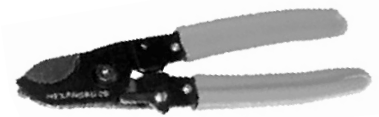
Ratcheting Cable cutter



Capacity : Upto 240 mm²
 Weight : 680 gms
 Price Rs.: 5400.00

HEXPRESS - 09

Wire Cutter



Capacity : Upto 16 mm²
 Weight : 160 gms
 Price Rs. : 700.00

HEXPRESS - 10

Wire Stripper Cum Cutter - 2 in 1



Capacity : 0.6 mm² to 5 mm²
 Weight : 290 gms
 Price Rs.: 735.00

HEXPRESS - 11

Fasting Tool For Cable Tie



Capacity : 6 mm² to 16 mm²
 Weight : 556 gms
 Price Rs.: 1400.00

HEXPRESS - 21

AUTOMATIC WIRE STRIPPER



Capacity : Upto 6mm
 Weight : 565 gms
 Price Rs. : 985.00

HEXPRESS - 14

Wire Cutter



Capacity : Upto 70 mm²
 Weight : 290 gms
 Price Rs.: 1400.00

HEXPRESS - 03

For End Sealing Ferrules



Capacity : 0.25 mm² to 6 mm²
 Weight : 420 gms
 Price Rs.: 2575.00

HEXPRESS - 04

For End Sealing Ferrules



Capacity : 6 mm² to 16 mm²
 Weight : 556 gms
 Price Rs.: 2650.00

HEXPRESS - 19

Insulated & Non-insulated End Sealing Ferrules



Capacity : 1.5 mm² to 6 mm²
 Weight : 120 gms
 Price Rs.: 950.00

HEXPRESS H-70

DIELESS



For Ring Type only
 Crimping Socket : 16 to 70 mm²
 For Ring Type : 16, 25 & 35 mm²
 Weight : 2.950 kg
 Price Rs. : 3300.00

HEXPRESS - 400

Heavy Duty - Hydraulic Hand Operated



Capacity : 50 mm² to 400 mm²
 Weight : 7 kg
 Price Rs.: 12100.00

POLYAMIDE 6 PA FLEXIBLE CONDUITS

(HSN 39172990) (Colour : Black)

Cat. No.	Dimensions (Inches)	Price / Metre	Metres	PG
NFC -7	1/4"	40.00	100	7
NFC-10	5/16"	50.00	100	9
NFC-12	3/8"	70.00	100	11
NFC-17	1/ 2 "	100.00	100	16
NFC-23	3/4"	180.00	50	21
NFC-28	1"	200.00	50	29
NFC-36	1 1/4"	275.00	25	36
NFC-48	2"	320.00	25	48



POLYAMIDE CONDUITS ADAPTERS (HSN 39172990)

(Colour : Black)

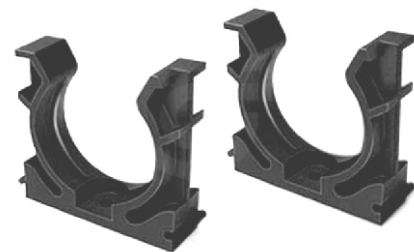


Mounting Adapter (HSN 39172990)

Description	Price
XFW-10	20.00
XFW-12	22.00
XFW-17	24.00
XFW-23	32.00
XFW-28	40.00
XFW-36	55.00
XFW-48	80.00



Cat No.	PG Size	Size	Price
AD-7	7	GCG-7	13.00
AD-13	9	GCG-10	15.00
AD-15.8	11	GCG-12	18.00
AD-18.5	13.5	GCG-13.5	20.00
AD-21.2	16	GCG-17	26.00
AD-28.5	21	GCG-23	36.00
AD-34.5	29	GCG-28	50.00
AD-42.5	36	GCG-36	60.00
AD-54.5	48	GCG-48	100.00



Metric Treading Gland (5 Pc. Adapter (HSN 39172990))

Description	Price
M-12	80.00
M-16	85.00
M-20	90.00
M-25	100.00

FLEXIBLE POLYAMIDE CONDUITS (HSN 39172990)
(Colour : Black) (40 to 105 oC)

Size	Metre	Price / Metre
PG - 7	100 m	25.00
PG - 9	100 m	33.00
PG - 11	50 m	38.00
PG - 13.5	50 m	40.00
PG - 16	50 m	51.00
PG - 21	50 m	72.00
PG - 29	25 m	100.00
PG - 36	25 m	135.00
PG - 48	25 m	250.00



* Slitted Pipe Available @ 10% Extra * Grey pipe available on order.

UV FLEXIBLE POLYAMIDE CONDUITS (HSN 39172990)
(Colour : Black) (40 to 105 oC)

Size	Metre	Price / Metre
PG - 7	100 m	50.00
PG - 9	100 m	55.00
PG - 11	50 m	60.00
PG - 13.5	50 m	80.00
PG - 16	50 m	90.00
PG - 21	50 m	150.00
PG - 29	25 m	190.00
PG - 36	25 m	270.00
PG - 48	25 m	370.00



POLYETHYLENE CORRUGATED FLEXIBLE PIPES (50 to 80 °C)
(HSN 39172990)

Size	ID Ø	OD Ø	Metre	Price / Metre
PG - 7	6.5	10	100 m	22.00
PG - 9	9.6	13	100 m	29.00
PG - 11	12.0	15.8	50 m	40.00
PG - 13.5	14.0	18.5	50 m	46.00
PG - 16	16.0	21.2	50 m	55.00
PG - 21	21.9	28.5	50 m	65.00
PG - 29	27.8	34.5	25 m	120.00
PG - 36	36.0	42.5	25 m	165.00



CABLE GLANDS - HSN 85389000



Metal Craft Industries



ARMOURED CABLE CORE & SIZE	SIEMENS TYPE		SIZE	DOUBLE COMP.	
	RATE PER PIECE	PKG.		RATE PER PIECE	PKG.
2 & 3 X 1.5 mm ²	36.00	150	3/8" (9 mm)	155.00	30
	43.00	150	1/2" LD (12mm)	172.00	30
5 X 1.5 mm ² 2 X 2.5 mm ²	43.00	150	5/8" LD (16 mm)	190.00	30
3 X 4 X 2.5 mm ² 3 X 4 X 4 mm ²	48.00	100	3/4" LD (19 mm)	212.00	25
2 X 3 X 4 X 6 mm ² 3 X 10 mm ² 6.7 C 2.5 mm ²	63.00	96	7/8" LD (22 mm)	270.00	24
10 X 12 & 14 X 2.5 mm ² 2 X 10 to 16 mm ² 4 X 10 mm ²	74.00	72	1" LD (25 mm)	302.00	15
3 & 4 X 16 mm ²	113.00	36	1.1/8" (28 mm)	385.00	15
2 & 3 X 25 to 50 mm ² 3½ & 4 X 25 mm ² 3½ X 4 X 25 mm ² 3½ & 4 X 35 mm ²	127.00	30	1.1/4" (32 mm)	506.00	11
3½ & 4 X 50 mm ²	166.00	30	1.3/8" (35 mm)	604.00	8
3 & 3½ X 70 to 95 mm ²	209.00	24	1.1/2" (38 mm)	703.00	6
3 & ½ X 120 to 150 mm ²	250.00	16	1.3/4" (45 mm)	979.00	4
3½ X 150 mm ²	321.00	12	2" (50 mm)	1122.00	3
3½ X 185 mm ² 3 & 3½ X 225 mm ²	410.00	8	2.1/4" (57 mm)	1303.00	3
3 & 3½ X 240 mm ²	485.00	6	2.1/2" (63 mm)	1795.00	2
3 & 3½ X 300 mm ²	580.00	6	2.3/4" (70 mm)	2035.00	2
3 X 400 mm ²	655.00	4	3" (75 mm)	2492.00	2
3½ X 400 mm ²	823.00	3	3.1/4" (82 mm)	2887.00	1
	968.00	2	3.1/2" (88 mm)	3744.00	1
	1218.00	2	4" (100 mm)	5070.00	1

ARMOURED CABLE CORE & SIZE	FLANGE TYPE GLAND	RATE PER PIECE	STD. PKG.
2, 3 & 4 X 1.5 MM ² 2, 3 X 2.5 MM ²	No. 5	121.00	50
4 X 2.5 MM ² 2, 3 X 4 MM ² 2 X 6 MM ²	No. 4	138.00	40
4 X 4 MM ² 2, 3 X 10 MM ² 3, 4 X 6 MM ²	No. 3	150.00	40
3 X 25 MM ² 2, 3 X 16 MM ² 4 X 10 MM ²	No. 2	188.00	40
4 X 16 MM ² 2, 3.5 & 4 X 25 MM ² 2, 3, 3.5 & 4 X 35 MM ² 3 X 50 MM ²	No. 1	225.00	40
4 X 25 MM ² 2, 3.5 & 4 X 50 MM ²	No. 11	270.00	30
3, 3.5 X 70 MM ²	No. 0	329.00	30
3 X 95 MM ²	No. 00	386.00	20
3.5 X 95 MM ² 3 X 120 MM ²	No. 38	420.00	18
3.5 X 120 MM ² 3 X 150 MM ²	No. 001	495.00	18
3 & 3.5 X 150 MM ² 3 & 3.5 X 185 MM ²	No. 002	590.00	15
3 & 3.5 X 225 MM ² 3 X 240 MM ²	No. 003	630.00	15
3.5 X 240 MM ² 3 & 3.5 X 300 MM ²	No. 0033	775.00	12
3 & 3.5 X 400 MM ²	No. 004	1001.00	12
3.5 X 630 MM ²	No. 005	1254.00	10

* M Threading DC Gland available @ 10% Extra



Overall Cable Diameter (mm)		Nipple Entry Thread (ET)	Weatherproof HWP		Flameproof HFP	
Min.	Max.		Size Code	Price Rs.	Size Code	Price Rs.
8.0	12.0	3/4"	²⁰⁵ MCW01SS	265.00	MCF01SS	240.00
12.0	16.5	3/4"	²²⁸ MCW01S	283.00	MCF01S	256.00
16.5	18.5	3/4"	²⁵⁸ MCW01	316.00	MCF01	285.00
18.5	20.0	1"	³³⁵ MCW02	408.00	MCF02	371.00
20.0	23.0	1"	³⁵⁴ MCW03	463.00	MCF03	421.00
23.0	26.0	1"	⁴⁶⁴ MCW04	585.00	MCF04	535.00
26.0	30.0	1,1/4"	⁵⁶² MCW05	684.00	MCF05	622.00
30.0	33.0	1,1/2"	⁸⁰⁹ MCW06	979.00	MCF06	890.00
33.0	37.0	1,1/2"	⁹³⁵ MCW07	1100.00	MCF07	1001.00
37.0	41.0	2"	¹¹⁷⁵ MCW08	1364.00	MCF08	1240.00
41.0	46.0	2"	¹³⁹⁸ MCW09	1575.00	MCF09	1435.00
46.0	52.0	2"	¹⁵¹⁵ MCW010	1775.00	MCF010	1614.00
52.0	60.0	2,1/2"	²²⁵⁰ MCW011	2481.00	MCF011	2255.00
60.0	66.0	3"	²⁶⁴⁵ MCW012	3000.00	MCF012	2722.00
66.0	72.0	3"	³⁵⁹⁵ MCW013	3800.00	MCF013	3400.00
78.0	84.0	3,1/2"	⁴¹²⁵ MCW014	4595.00	MCF014	4110.00
84.0	94.0	4"	⁵⁹³⁵ MCW015	6300.00	MCF015	5730.00
94.0	104.0	4,1/2"	⁶⁷⁹⁵ MCW016	7100.00	MCF016	6470.00



**SINGLE COMPRESSION
LONG NIPPLE CABLE GLANDS**

SIZE	PRICE	PKG.
5/8"	65.00	150
3/4"	75.00	100
7/8"	98.00	96
1"	111.00	72



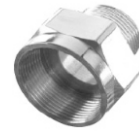
**DUMMY (MCWS)
(STOPPING PLUG)**

SIZE	PRICE	PKG.
3/4"	68.00	100
1"	105.00	80
1 1/4"	179.00	60
1 1/2"	224.00	40
2"	432.00	20



**DOUBLE COMPRESSION
CABLE GLANDS (NPT THREADING)**

SIZE	PRICE	PKG.
1/2"	231.00	35
3/4"	313.00	30
1"	424.00	20

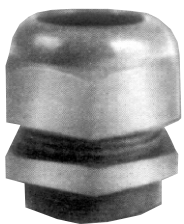


REDUCER (MCRW)

SIZE	PRICE	PKG.
3/4" to 1"	75.00	100
1" to 1 1/4"	149.00	50
1 1/4" to 1 1/2"	208.00	30
1 1/2" to 2"	402.00	20
2" to 2 1/2"	595.00	20

**PG THREAD STANDARD
BRASS CABLE GLANDS**

IP 68



SIZE	Rate For Gland (WITH LOCK NUT)
Pg 7	69.00
Pg 9	93.00
Pg 11	122.00
Pg 13.5	149.00
Pg 16	164.00
Pg 21	239.00
Pg 29	432.00
Pg 36	624.00
Pg 42	818.00
Pg 48	1144.00

**"M" THREAD BRASS
CABLE GLANDS**



SIZE (Inches)	Price Rs. (Per Pc.)
M 12	68.00
M 16	90.00
M 20	143.00
M 25	195.00
M 32	343.00
M 40	583.00
M 50	819.00

SAHIB

TERMINAL STRIPS & BLOCKS

HSN 85367000



DESCRIPTION	RATING (AMP)	NO. OF WAYS	CAT. NO.	PRICE (EACH)	STD. PKG.
BAKELITE TERMINAL OPEN TYPE	15A	2	STBO-15A	15.00	100
	15A	3	STBO-15A	20.00	70
	15A	4	STBO-15A	23.00	60
	15A	6	STBO-15A	31.00	60
	15A	8	STBO-15A	40.00	30
	15A	10	STBO-15A	46.00	30
	15A	12	STBO-15A	55.00	25
30A TERMINAL OPEN TYPE	30A	2	STBO-30A	24.00	50
	30A	3	STBO-30A	28.50	40
	30A	4	STBO-30A	33.50	30
	30A	5	STBO-30A	41.50	20
	30A	6	STBO-30A	47.00	25
	30A	8	STBO-30A	62.00	15
	30A	10	STBO-30A	77.00	15
	30A	12	STBO-30A	86.00	12
60A TERMINAL OPEN TYPE	60A	2	STBO-60A	45.00	32
	60A	3	STBO-60A	62.00	25
	60A	4	STBO-60A	80.00	20
	60A	6	STBO-60A	108.00	12
	60A	8	STBO-60A	141.00	12
	60A	10	STBO-60A	178.00	12
	60A	12	STBO-60A	215.00	12

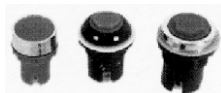
DESCRIPTION	RATING (AMP)	NO. OF WAYS	CAT. NO.	PRICE (EACH)	STD. PKG.
PVC TERMINAL STRIP CLOSE TYPE	6A	12	STP-6A	30.00	45
	10A	12	STP-10A	43.00	35
	15A	12	STP-15A	70.00	15
BAKELITE TERMINAL STRIP CLOSE TYPE	6A	12	STB-6A	38.00	45
	10A	12	STB-10A	53.00	20
	15A	12	STB-15A	74.50	15
BAKELITE (RIGID) TERMINAL CLOSE TYPE	30A	2	STB-30A	22.00	50
	30A	3	STB-30A	27.50	50
	30A	4	STB-30A	33.50	40
	30A	5	STB-30A	45.00	35
	30A	6	STB-30A	49.50	25
	30A	8	STB-30A	67.50	20
	30A	10	STB-30A	84.00	25
	30A	12	STB-30A	95.50	15
	60A	2	STB-60A	62.00	24
	60A	3	STB-60A	95.00	20
TERMINAL BLOCK END PLATE	100A	SINGLE	STB-100A	75.00	25
	100A	SINGLE	STP-100EP	13.00	50

HSN 85369010

EMMESS / VIZ

HSN 85369090

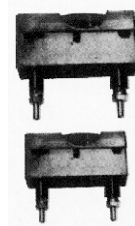
PUSH BUTTON SWITCH



DESCRIPTION	PRICE	PKG.
SPB-3 Push Button FLAT (22.5)	25.00	20
SPB-1 (30.5)	28.00	20

HSN 85369090

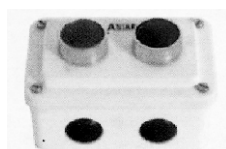
SLIDE LOCK FUSE



CAT. NO.	PRICE Rs.	PKG.
SSF-5A	46.00	20
SSB-5A	58.00	15
SSF-15A	67.00	12
SSB-15A	90.00	10
SSF-30A	115.00	10
SSB-30A	135.00	10

PUSH BUTTON STATION PLASTIC / METAL

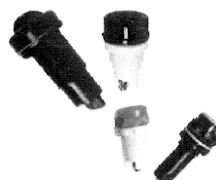
With Push Button



DESCRIPTION	PRICE
1 WAY	100.00
2 WAYS (Plastic)	130.00
2 WAYS (Metal)	175.00

INDICATING LAMPS

HSN 85311090



DESCRIPTION	PRICE	PKG.
SP-21 16 MM	16.00	100
SP-22 22.5 MM	22.00	50

Model No.	Description	Price Rs.
NE 53/6S NE 53/6 NE 710/H NE53/6S	Hour Meter to read 99999.9 Hz , 230V, 50Hz / 110V C, 50 Hz 24 V Dc	660.00 990.00
NE IP01	Impulse Counter Counting Range 999999 Std. Voltage 12V DC, 24 V DC & 230V AC & 110V AC	770.00
NE C6L	Impulse Counter LED	
RS 5	Stroke Counter, Left Hand Side Knob Reset	255.00
MJS	Junior Stroke Counter, Left & Right Hand Side Knob Reset	265.00
NE204	Mini Stroke Counter, Left Hand Side Knob Reset	265.00
NSR6D	Senior Revolution Counter Digital Left & Right Hand Side Lever Reset	1650.00
NSR6	Senior Revolution Counter Left & Right Hand Side Lever Reset	630.00

PARAGON

MODEL	FUNCTION	SIZE MM	PRICE
DIGITAL PRESET TIMER - PROGRAMMABLE (HSN 91061000)			
TIMEX-932	3 DIGIT, 2 CO	96 X 96 X 74	1610
TIMEX-732	3 DIGIT, 2 CO	72 X 72 X 74	1610
TIMEX-432	3 DIGIT, 2 CO	48 X 48 X 92	1610
TIMEX-732-MR	3 DIGIT, 2 CO MR	72 X 72 X 74	1834
TIMEX-432-MR	4 DIGIT, 2 CO MR	48 X 48 X 92	1834
TIMEX-962	3+3 DIGIT-2CO	96 X 96 X 74	1791
TIMEX-762	3+3 DIGIT-2CO	72 X 72 X 74	1791
TIMEX-462	3+3 DIGIT-2CO	48 X 48 X 92	1791
TIMEX-762-MR	3+3 DIGIT-2CO MR	72 X 72 X 74	2023
TIMEX-462-MR	3+3 DIGIT-2CO MR	48 X 48 X 92	2023
RPM INDICATOR (HSN 90291090)			
RPM-0249	RPM INDICATOR	48 X 96 X 74	1704
RPM-0277	RPM INDICATOR	72 X 72 X 74	1704
RPM-0244	RPM INDICATOR	48 X 48 X 92	1704
TEMPERATURE INDICATOR-PROGRAMMABLE (HSN 90328990)			
P1-4901	TEMP INDICATOR	48 X 96 X 74	1523
P1-901	TEMP INDICATOR	96 X 96 X 74	1523
P1-701	TEMP INDICATOR	72 X 72 X 74	1523
P1-401	TEMP INDICATOR	48 X 48 X 92	1523

MODEL	FUNCTION	SIZE MM	PRICE
TEMPERATURE CONTROLLER - PROGRAMMABLE (HSN 90328990)			
PID-9802	4+4 DIGIT, 2 O/P	96 X 96 X 74	2407
PID-7802	4+4 DIGIT, 2 O/P	72 X 72 X 74	2407
PID-4802	4+4 DIGIT, 2 O/P	48 X 48 X 92	2407
PID-9801	4+4 DIGIT, 1 O/P	96 X 96 X 74	2168
PID-7801	4+4 DIGIT, 1 O/P	72 X 72 X 74	2168
PID-4801	4+4 DIGIT, 1 O/P	48 X 48 X 92	2168
PID-9401	4 DIGIT, 1 O/P	96 X 96 X 74	1805
PID-7401	4 DIGIT, 1 O/P	72 X 72 X 74	1805
PID-4401	4 DIGIT, 1 O/P	48 X 48 X 92	1805
TEMPEX-911	4 DIGIT, 1 O/P	96 X 96 X 74	1653
TEMPEX-711	4 DIGIT, 1 O/P	72 X 72 X 74	1726
TEMPEX-411	4 DIGIT, 1 O/P	48 X 48 X 92	1726
TEMPEX-922	4+4 DIGIT, 2 O/P	96 X 96 X 74	2182
TEMPEX-722	4+4 DIGIT, 2 O/P	72 X 72 X 74	2182
TEMPEX-422	4+4 DIGIT, 2 O/P	48 X 48 X 92	2182
PROCESS INDICATOR - PROGRAMMABLE (HSN 902680902)			
PI-4955	PROCESS IND.	48 X 96 X 74	1704
PI-955	PROCESS IND.	96 X 96 X 74	1704
PI-755	PROCESS IND.	72 X 72 X 74	1704
PI-455	PROCESS IND.	48 X 48 X 92	1704



TIMERS, DIGITAL COUNTERS & TEMPERATURE CONTROLLERS

MODEL	FUNCTION	SIZE	PRICE
DIGITAL PRESET TIMER (HSN 91061000)			
THUMBWHEEL & DISPLAY TYPE ■ MULTI MODE / TIME			
TIMER-01-2D-P1	2 DIGIT, 1 CO	72 X 72 mm	1791
TIMER-01-3D-P1	3 DIGIT, 1 CO	72 X 72 mm	1958
TIMER-01-2D-P2	2 DIGIT, 2 CO	72 X 72 mm	1958
TIMER-01-3D-P2	3 DIGIT, 2 CO	72 X 72 mm	2168
TIMER-01-4D	4 DIGIT, 2 CO	72 X 72 mm	2342
TIMER-01-6D	6 DIGIT, 2 CO	72 X 72 mm	2654
TIMER-920-2D-P1	2 DIGIT, 1 CO	96 X 96 mm	1791
TIMER-920-2D-P2	2 DIGIT, 2 CO	96 X 96 mm	...
TIMER-920-3D-P1	3 DIGIT, 1 CO	96 X 96 mm	...
TIMER-920-3D-P2	3 DIGIT, 2 CO	96 X 96 mm	1958
FOR BATTERY BACKUP (BB) ADD - 180			
TIMER-25-2D-P1	2 DIGIT, 1 CO	48 X 48 mm	1791
TIMER-25-3D-P1	3 DIGIT, 1 CO	48 X 48 mm	...
TIMER-25-2D-P2	2 DIGIT, 2 CO	48 X 48 mm	...
TIMER-25-3D-P2	3 DIGIT, 2 CO	48 X 48 mm	1958
HOUR TIMER (TIME TOTALIZER) (HSN 91061000)			
MULTI TIME RANGE			
TIMER-02	-----	72 X 72 mm	
TIMER-02-BB	BATT. BACKUP	72 X 72 mm	
DIGITAL CYCLIC TIMER (HSN 91061000)			
THUMBWHEEL & DISPLAY TYPE ■ MULTI MODE / TIME			
TIMER-03-2D	2+2 DIGIT, 2 CO	72 X 72 mm	...
TIMER-03-3D	3+3 DIGIT, 2 CO	72 X 72 mm	2516
FOR BATTERY BACKUP (BB) ADD - Rs. 180			
DIGITAL PRESET COUNTER (HSN 90291090)			
MULTI SENSOR / SPEED / MODE			
COUNTER-01-P1	4 DIGIT, 1 CO	72 X 72 mm	...
COUNTER-01-P1-BB	4 DIGIT, 1 CO, BATTERY BACK UP	72 X 72 mm	...
COUNTER-01-4D	4 DIGIT, 2 CO, AUTORESET	72 X 72 mm	...
COUNTER-01-4D-BB	4 DIGIT, 2 CO, AUTO RESET, BATTERY BACKUP	72 X 72 mm	2486
COUNTER-01-6D	6 DIGIT, 2 CO, AUTORESET	72 X 72 mm	3321
COUNTER-01-6D-BB	6 DIGIT, 2 CO, AUTORESET, BATTERY BACKUP	72 X 72 mm	...

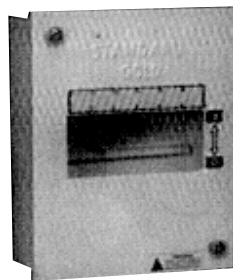
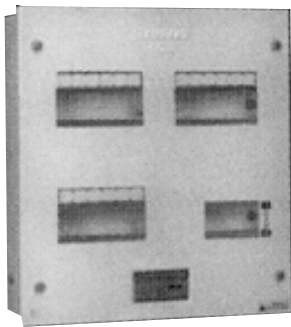
HSN -90268090

MODEL	FUNCTION	PRICE
HSN 9026	LLC-11 LIQUID LEVEL CONTROLLER - ADJUSTABLE SENSITIVITY	1131
	LLC-22 LIQUID LEVEL CONTROLLER - FIXED SENSITIVITY	950
	PROBE LLC PROBE / ELECTRODE	212
HSN 9029	PRX-11 PROXIMITY CONTROL UNIT - MULTIMODE	1109
	PRX-22 PROXIMITY CONTROL UNIT - SINGLE MODE	769
	FFD-11 FLAME FAILURE DETECTOR - TIMER	...

MODEL	FUNCTION	SIZE	PRICE
TEMPERATURE CONTROLLER (HSN 90328990)			
PTC-1	DIGITAL 1-SET POINT CNTR	96 X 96 mm	1726
PTC-3	"	72 X 72 mm	1726
PTC-25	"	48 X 48 mm	1726
PTC-55	DIGITAL 2-SET POINT CNTR	72 X 72 mm	...
BTC-1	BLIND 1-SET POINT CNTR WITH DEVIATION MASTER	96 X 96 mm	1288
BTC-28	BLIND 1-SET POINT CNTR	48 X 48 mm	1138
FOR 2 CO RELAY CONTACT (IN PTC-1, PTC-3, PTC-25) ADD			
TEMPERATURE INDICATOR (HSN 90328990)			
P1-03	---	72 X 72 mm	
P1-25	---	48 X 48 mm	
P1-01	---	96 X 96 mm	
MP1-01	---	96 X 96 mm	
PHASE FAILURE RELAY (Single Phase Preventor) HSN 85363000			
PCON-PF-5	PHASE FAILURE UNBALANCE RELAY		595.00
REAL TIME SWITCH (HSN 91061000)			
RTS-29(ST/8P)	DAILY TIME SWITCH, DAILY / WEEKLY (48x48)		1929.00
TMR-DIN RAIL/WALL MOUNTING TIMER (HSN 91061000)			
Size : [22.5(W) x 75(H) x 100(D)] mm			
MODEL	FUNCTION	PRICE	
TMR-23-P1	1.5/6/15/60-SEC-1CO	761	
TMR-23-P2	1.5/6/15/60-SEC-2CO	892	
TMR-23	1.5/6/15/60-S/M/H-2CO	979	
TMR-24	1.5/6/15/60-S/M/H-2CO-UNIVERSAL VOLTAGE	1066	
TMR-EC1	15/60-S/M, ON/OFF DELAY / EQUAL CYCLIC-1CO	754	
TMR-SD	STAR-DELTA TIMER, MULTI VOLTAGE	899	
TMR-23-C	ADJUSTABLE CYCLIC	1138	
TMR-24C	ADJUSTABLE CYCLIC, UNIVERSAL VOLTAGE	1225	
TMR-FSR	FORWARD, REVERSE, STOP TIMER	1472	
TMR-EST	ENGINE MULTI-ATTEMPT STARTING TIMER	1269	
TMR DUAL	TIME (1) - 6/60 - S/M - 1 CO TIME (2) - 6/60 - S/M - 1 CO	1298	
TMR INST	1.5/9/15/60 - S/M/H - DELAYED - 1 CO, INSTANT-1CO	1102	
TMR-SR1	FACTORY SET TIME RANGE & MODE - 1 CO	616	
TMR-SR2	FACTORY SET TIME RANGE & MODE - 2 CO	732	
TM-48 PLUG IN / PANEL MTG. TIMER (HSN 91061000)			
8 PIN / 11 PIN / SCREW TERMINAL 48(H) X 48 (W) X 87 (D) MM			
TM-4823-P1-8P/ST	1.5/6/15/60 - SEC - 1 CO	761	
TM-4823-P2-8P/ST	1.5/6/15/60 - SEC - 2 CO	892	
TM-4823-8P/ST	1.5/6/15/60 - S/M/H - 2 CO	979	
TM-48EC1-8P/ST	15/60-S/M - 1 CO MULTIVOLTAGE	790	
TM-48C23-8P/11P/ST	ADJ. CYCLIC	1138	
TM-4824-8P/11P/ST	1.5/6/15/60 - S/M/H - 2CO UNI. VOLT.	1065	
TM-48C24-8P/11P/ST	ADJ. CYCLIC UNI. VOLTAGE	1275	
TM 48 SR1	FACT. SET TIME RANGE & MODE -1CO	616	
TM 48 SR2	FACT. SET TIME RANGE & MODE-1CO	732	
ADAPTOR PLATE - HSN 85389000			
96X72 / 96X48 / 72X48			100.00

M.S. BOX SP & N RANGE	
DESCRIPTION	PRICE EACH
1 / 2 POLE	140.00
3 / 4 POLE	185.00

AC BOXES		
DESCRIPTION	PRICE Rs. EMPTY	PRICE Rs. WITH PLUG & SOCKET
20 A SP	240.00	450.00
20 A TP	370.00	700.00
30A TP	390.00	900.00



SP & N RANGE

S.S. ENCLOSURE FITTED WITH DIN CHANNEL, NEUTRAL LINK BUSBAR & INCOMING CONTACT (WITHOUT MCBs & ISOLATOR)

SOCKET BOX ONLY		
DESCRIPTION	PRICE Rs.	PRICE Rs.
20 A SP / 190	20 A TP / 190	20 A TP / 190



WAYS	SINGLE DOOR	DOUBLE DOOR
4	285	530
6	330	620
8	390	700
10	470	785
12	540	870
16	660	1050

TP & N RANGE

S.S. ENCLOSURE FITTED WITH DIN CHANNEL, NEUTRAL LINK BUSBAR & INCOMING CONTACT (WITHOUT MCBs & ISOLATOR)

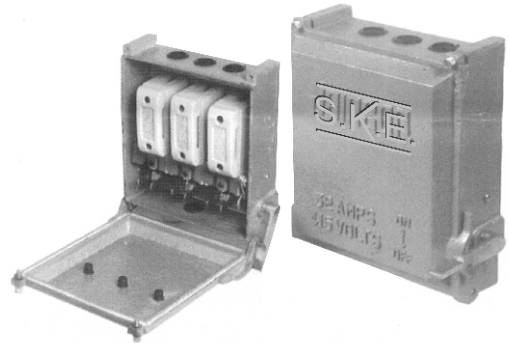
WAYS	SINGLE DOOR	DOUBLE DOOR
4	1040	1430
6	1250	1740
8	1470	2050
12	1925	2660

DUMMY PLATE (HSN 8538) : 3.50

MCB BLANKER Suitable for blank cutout in Panel & DB Box. Colour - 7035, Product Type : Single Module, Strip pf 24 Pcs. **Rs. 16.00**

MAIN SWITCHES (SHEET METAL)

RATING	SWITCH	4 POLE CHANGEOVER
16 A X 415 V		
32 A X 415 V	1600.00	2400.00
63 A X 415 V	3600.00	5400.00
100 A X 415 V	5920.00	7711.00
200 A X 415 V	9400.00	13866.00



BUSBAR

RATING	TYPE	PRICE
32A / 415V	REGULAR	2025.00
63A / 415V	REGULAR	3000.00
100A / 415V	REGULAR	4500.00
200A / 415V	REGULAR	7350.00
320A / 415V	REGULAR	8500.00
400A / 415V	REGULAR	11132.00
630A / 415V	REGULAR	21505.00
63 A / 415 V	HRC BUSBAR	3400.00
100 A / 415 V	HRC BUSBAR	4000.00
200 A / 415 V	HRC BUSBAR	7000.00



**MCCB ENCLOSURE MS Powder Coated
(Without MCCB) HSN 8537**

MODEL / NUMBER	REGULAR	PREMIUM
DU 100	950.00	1050.00
DU 250	1200.00	...
DU 250 HEAVY	2000.00	2200.00
DH 100 / 200	1200.00	...
DN / DH 250 / 400	2000.00
DN / DH 400 / 630	3600.00

MS JUNCTION BOXES - Powder Coated HSN : 8538

SIZE (INCHES)	2 " DEEP	3 " DEEP	4 " DEEP	6 " DEEP
4 X 4	105.00	140.00	180.00	---
6 X 4	150.00	200.00	240.00	---
6 X 6	210.00	260.00	300.00	360.00
6 X 8	---	300.00	350.00	430.00
8 X 10	---	420.00	600.00	600.00
10 X 12	500.00	570.00	670.00	670.00
12 X 15	750.00	750.00	850.00	840.00



PANEL ENCLOSURES - Powder Coated HSN : 8538

SIZE (INCHES)	6 " DEEP	8 " DEEP	10 " DEEP
6 x 8	1050.00	---	---
8 x 10	1350.00	---	---
10 x 12	1400.00	1600.00	---
12 x 12	1700.00	1670.00	---
12 x 15	2000.00	2200.00	2360.00
12 X 18	---	2570.00	2600.00
15 x 15	2160.00	2475.00	---
15 x 20	3250.00	3360.00	---
18 x 24	4100.00	4340.00	4500.00
24 x 30	5700.00	6100.00	6600.00



MULTI AC BOXES - Powder Coated HSN : 8538

DESCRIPTION	PRICE
20 Amp 2 Pole X 2 + 2 MCB Slot	900.00
20 Amp 2 Pole X 3 + 3 MCB Slot	1300.00
20 Amp 2 Pole X 4 + 4 MCB Slot	1450.00
30 Amp 3 Pole X 3 + 3 MCB Slot	1500.00



ELMECO INDIA



PKG. 10 Nos.

SC. Tr. TYPE MICRO SWITCHES (HSN 85365090)

CODE	DESCRIPTION	PRICE
EM3-01	BASIC with Integral Actuator	37.00
EM3-02	Short Plain Lever	39.00
EM3-03	Medium Plain Lever	40.00
EM3-04	Extended Plain Lever	43.00
EM3-05	Short Roller Lever	44.00
EM3-06	Medium Roller Lever	46.00
EM3-07	Medium V Notch Lever	46.00
EM3-08	Extended V Notch Lever with Aux. Actuators	47.00
EM3-09	Plain Leaf	45.00
EM3-10	Roller Leaf	49.00
EM3-11	Hinged Lever	44.00
EM3-12	Hinged Lever with Roller	49.00
EM3-13	Extended Hinged Lever	49.00
EM3-14	Extended Hinged Lever with Roller	51.00
EM3-15	Finger Push Button (FPB)	55.00
EM3-16	Finger Push Button (DFPB)	91.00
EM3-17	Push Button (PB)	58.00
EM3-18	Push Button DP (DPB)	97.00
EM3-19	Short Lever DP	85.00
EM3-20	Extended Lever DP	87.00
TR-2010	10 AMP DPST Trigger Switch	90.00

Discount - %



GIRISH EGO (HSN 85161000) SAI (HSN 90321090)

S.No.	DESCRIPTION / CAT. No.	PRICE
1.	Round Thermostat 305-C 25°C - 85°C - 15 A	175.00
2.	Round Thermostat 205-C 30°C - 85°C - 15 A	160.00
3.	GEC-7 Popular 15A Thermostat 30°C - 75°C	110.00
4.	GEC-11 Popular 15A Thermostat 30°C - 75°C	120.00
5.	Compaq-110 15A Capillary Thermostat 30°C - 110°C	175.00
6.	Sai-300 15A Capillary Thermostat 50°C - 300°C	240.00
7.	Energy Regulator SunSin 0°C - 100°C	175.00
8.	SUMO Energy Regulator 2300 AC Heavy Duty	330.00

SALZER SA PLUG IN RELAY HSN 85364900



S.No.	DESCRIPTION	PRICE
1.	MKG 2 P 12V DC	212.00
2.	MKG 2 P 24V DC	215.00
3.	MKG 2 P 48V DC	230.00
4.	MKG 2 P 110V DC	256.00
5.	MKG 2 P 24V AC	213.00
6.	MKG 2 P 110V AC	215.00
7.	MKG 2 P 230V AC	275.00
8.	MKG 3 P 12V DC	268.00
9.	MKG 3 P 24V DC	270.00
10.	MKG 3 P 24 V AC	256.00
11.	MKG 3 P 48V DC	321.00
12.	MKG 3 P 110V DC	311.00
13.	MKG 3 P 230V AC	317.00
14.	MKG 3 P 110V AC	261.00
15.	MSP 2 P 24V DC	173.00
16.	MSP 2 P 230V AC	201.00
17.	MSP 4 P 24V DC	184.00
18.	MSP 4 P 230V AC	232.00



WACO INSTRUMENTS
HSN 90308990



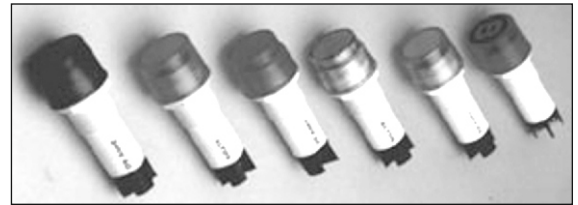
S.No.	DESCRIPTION / CAT. No.	PRICE
1.	Digital Earth Tester Dual Range	5700
2.	Metal Body Hand Operated Megger 1000V / 200 MegaOHMs	10500
3.	Metal Body Hand Operated Megger 1000V / 500 MegaOHMs	10800
3.	Metal Body Hand Operated Megger 2500V / 5000 MegaOHMs	12800
4.	Metal Body Hand Operated Megger 5000V / 5000 MegaOHMs	14200
5.	Metal Body Hand Operated Megger 5000V / 10000 MegaOHMs	15200

Discount - %



ALTOS

HSN 853950 - GST 12%



ITEM	VOLTAGE	COLOUR	PRICE
10 mm LED Panel Lamp	12, 24, 48, 110, 220 V AC/ DC	R, Y, G	76.00
		B, Wh	76.00
		Bi-Colour R/G & R/Y Combination	95.00
16 mm LED Panel Lamp	12, 24, 48, 110, 220 V AC/ DC	R, Y, G, A	100.00
		B, Wh	140.00
		Bi-Colour R/G & R/Y Combination	
22.5 mm LED Panel Lamp	12, 24, 48, 110, 220 V AC/ DC	R, Y, G, A	115.00
		B, Wh	140.00
	415 V AC/ DC	R, Y, G, A	150.00
		B, Wh	161.00
		Bi-Colour R/G & R/Y Combination	
22.5 mm Flasher & Buzzer	12, 24, 48, 110, 220 V AC/ DC	R, Y, G, A	300.00

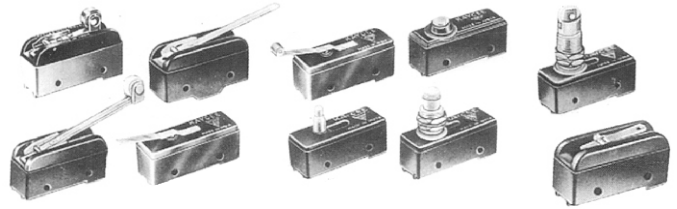


DESCRIPTION / CAT. No.	PRICE
Multi Tier Lamps	
MTLD 1 Tier - 24/230 V AC-DC Without Buzzer	715.00
MTLD 2 Tier - 24/230 V AC-DC Without Buzzer	980.00
MTLD 3 Tier - 24/230 V AC-DC Without Buzzer	1450.00
Extra Flasher	300.00
Extra Buzzer	300.00
Roof Top Indicator	
6,12,24,48,110,240V AC/DC Colours : R/A/G/B RTI	800.00
RTF (With Flasher)	950.00
RTF B (With Flasher & Buzzer)	1350.00
RLRT - Revolving Lamp (110/220V DC)	1200.00
RLRTB - With Buzzer (110/220V DC)	1950.00

DESCRIPTION / CAT. No.	PRICE
Busbar System	2950
BIS-RT-R/Y/B-240A/N	3150
Busbar System	
BIS-RT-R/Y/B-440A/N	
Aviation Light	
AOL-Q3-R-240A/N	
Hand Lamp	
HL-HT-30 SMD-24A D/N	
Industrial Emergency Light - Gangway Light with 1 Hour Backup	
GWL-E3-W-240 A/N-1	
MACHINE LAMP	
ML-6P-230 V AC COLOUR WHITE	
HAND LAMP	
HL-6P-230 V AC COLOUR WHITE	2500.00



HSN 85365090



MICRO SWITCHES

CODE	DESCRIPTION	PRICE
FIN 0-1	Basic Micro Switch (Pin Plunger)	174.00
FIN-02	Plain Lever Long	210.00
FIN-03	Roller Lever Short	215.00
FIN-04	Roller Lever Long	220.00
FIN-05	Flexible Leaf	202.00
FIN-06	Flexible Roller Leaf	206.00
FIN-07	Finger Push Button (FPB)	223.00
FIN-08	Compact Overtravel Plunger	227.00
FIN-09	Extended Overtravel Plunger	234.00
FIN-10	Panel Mount Plunger	238.00
FIN-11	Panel Mount Roller Plunger (Cross)	257.00
FIN-12	Panel Mount Roller Plunger (Across)	258.00
FIN-13	Short Plain Lever (RA)	215.00
FIN-14	Short Plain Roller Lever (RA)	220.00
FIN-15	Medium Plain Lever (RA)	223.00
FIN-16	Medium Plain Roller Lever (RA)	228.00
FIN-17	Plain Lever PVC (RA)	257.00
FIN-18	Aux. Panel Mount Roller Plunger	267.00
FIN-19	Aux. Panel Mount Plunger	261.00
FIN-20	Plain Lever Short (Plastic Type)	220.00
BMS-7	Sp. Extended Overtravel Plunger	266.00
T-10	Panel Mount Plunger	271.00

FOOT SWITCHES

CODE	DESCRIPTION	PRICE
BFS-00/C2.2	6A 230V With 2 Core 2 Mtr Wire	352.00
BFS-01/A/C2.2	10A 230V With 2 Core 2 Mtr Wire	460.00
BFS-02/A/C2.2	10A 230V With 2 Core 2 Mtr Wire	584.00
BFS-05/B	15A 230V (Micro Switch)	1846.00
BFS-05/X	10A 500V AC	1934.00
BFS-09/LS	10A / 500 VAC Heavy Duty Foot Switch	3868.00
BFS-10X	10A / 500 VAC Heavy Duty Foot Switch	2461.00
BFS-12/X	10A / 500 VAC Heavy Duty Foot Switch	3120.00
BFS-13/A	10A / 230 VAC Heavy Duty Foot Switch without Wire	485.00
BFS-13/Z/C2.2	Push to ON, Push to OFF, 10A 230 VAC with 2 Mtr Wire	775.00
BFS-10/X2	Heavy Duty with 3 Positions	2681.00
BFS-10/XX	Heavy Duty Foot Switch	2628.00



Solar Connector

HSN 85369090

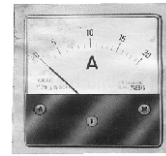
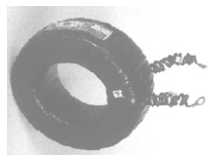
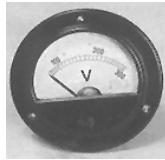
Description	Price
MC4 Solar Connector male and Female Pair	65.00



SR Power STATIC ELECTRONIC KWH METERS  HSN 90283010

RANGE	RATE	LCD DISPLAY
5 - 20 A Single Phase Numeric	360.00	520.00
10 - 40 A Three Phase Numeric	1100.00	1300.00
10 - 60 A Three Phase Numeric	1200.00	1400.00
CT Operated (-- / 5)	1300.00	1500.00





MOVING IRON AC METERS (HSN 90303310)

RANGE	ROUND FLUSH	SQUARE FLUSH	SQUARE FLUSH	SQUARE FLUSH	SQUARE FLUSH	ROUND PED.
	S0-65	SR-72	SR-80	SR-96	SR-144	4"
<u>AMMETERS</u> 0 TO 40 A	120.00	170.00	170.00	310.00	700.00	
50 A TO 100 A	130.00	180.00	180.00	330.00	720.00	
150 A TO 200 A	—	220.00	—	350.00	740.00	
250 TO 500 A	—	230.00	—	370.00	800.00	—
ABOVE 500A (SUPPRESSED SCALE)	—	—	—	—	-----	—
<u>VOLTMETERS</u> 0 TO 300 V	120.00	150.00	170.00	310.00	700.00	
301 V TO 600 V	130.00	160.00	180.00	320.00	720.00	
<u>FREQUENCY METERS</u>	—	170.00			-----	—
<u>METERING PANELS</u>	400.00	430.00	—	1200.00	—	—

WINDOW METER (65X65) : Rs. 130.00

SR 52 300V : Rs. 170.00

C.T. CLAMP : Rs. 30.00

DIGITAL AMP + VOLT / Frequency METER (HSN 9030)

SIZE	DESCRIPTION	PRICE Rs.
SR - 72	Digital Current & Volt Meter	500.00
SR - 72	Frequency Meter	700.00
SR - 96	Digital Current & Volt Meter	700.00
SR - 96	Frequency Meter	1000.00

MOVING COIL DC METERS (HSN 90303310)

RANGE	MO - 65	MR - 72	MR - 96	MR - 80
1A to 40 A (With internal shunt)	350.00	480.00	600.00	530.00
5A to 7500 A (Shunt price is extra)	350.00	480.00	600.00	530.00
<u>VOLTMETERS</u>				
50 mV TO 30 V	-----	-----	-----	-----
50 V TO 300 V	350.00	480.00	600.00	530.00
500 V TO 600 V	350.00	480.00	600.00	530.00

B.P.L. TYPE CURRENT TRANSFORMERS 5 VA, 10 VA CLASS 1.0 AS PER BSS 3938 / 1965. (HSN 85042100)

RATIO	ID (mm)	RATED BURDEN	UNIT PRICE	RATIO	ID (mm)	RATED BURDEN IN VA	UNIT PRICE
30, 50, 60, 75, 100, 150, 200 / 5A	55	15 VA	450.00	1000 / 5A	100	15 VA	415.00
30, 50, 60, 75, 100, 150 / 5A	50	5 VA	275.00	1200 / 5A	100	15 VA	455.00
200 / 5A	50	5 VA	285.00	1500 / 5A	130	15 VA	620.00
250 / 5A	55	10 VA	315.00	1600 / 5A	130	15 VA	650.00
300 / 5A	55	10 VA	325.00	2000 / 5A	130	15 VA	720.00
400 / 5A	65	15 VA	335.00	2500 / 5A	130	15 VA	1100.00
500 / 5A	65	15 VA	345.00	3000 / 5A		15 VA	1300.00
600 / 5A	70	15 VA	355.00	4000 / 5A		15 VA	1500.00
800 / 5A	100	15 VA	385.00	5000 / 5A		15 VA	1900.00

EXTERNAL D.C. SHUNTS (WITH 75 M.V. DROPS) CLASS 1.0 (HSN 85332929)



PARTICULARS	PRICE EACH	PARTICULARS	PRICE EACH
10 AMP	250.00	300 AMP	1250.00
15 AMP	260.00	400 AMP	1540.00
20 AMP	300.00	500 AMP	1620.00
25 AMP	320.00	600 AMP	1870.00
30 AMP	330.00	750 AMP	2500.00
40 AMP	350.00	800 AMP	2600.00
50 AMP	400.00	1000 AMP	3700.00
60 AMP	460.00	1200 AMP	4400.00
75 AMP	550.00	1500 AMP	4700.00
100 AMP	650.00	2000 AMP	5500.00
150 AMP	750.00	2500 AMP	7000.00
200 AMP	1000.00	3000 AMP	9100.00
250 AMP	1200.00	4000 AMP	11700.00

SMALL SHUNTS

300 AMP	700.00	400 AMP	800.00	500 AMP	900.00
---------	--------	---------	--------	---------	--------



AUTOMATIC CHANGE OVER SWITCH (HSN 85439000)

DESCRIPTION	Rate Rs.
32 A 2 POLE Mini	1000.00
32 A TWO POLE	1500.00
32 A FOUR POLE	3250.00
63 A FOUR POLE	8000.00
63 A FOUR POLE Heavy	10000.00
100 A FOUR POLE	18000.00

MULTI METERS (HSN 9030)

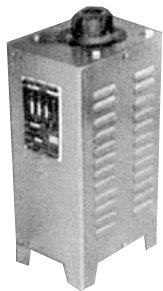
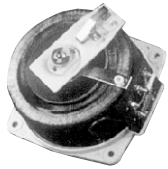
DESCRIPTION	Rate Rs.
MOVING TYPE	400.0

VARIABLE VOLTAGE AUTO TRANSFORMERS (DIMMERSTAT) - Air Cooled (HSN 85044090)



SINGLE PHASE CLOSED

SINGLE PHASE OPEN



THREE PHASE CLOSED

SINGLE PHASE			THREE PHASE		
INPUT 240V AC, 50 Hz. OUTPUT 0 - 270 V AC			INPUT 240V AC, 50 Hz. OUTPUT 0 - 270 V AC		
OUTPUT CURRENT	FLUSH (OPEN) TYPE	PORTABLE (CLOSED) TYPE	OUTPUT CURRENT	FLUSH (OPEN) TYPE	PORTABLE (CLOSED) TYPE
1 Amp	1470	2160	1 Amp	5200	6080
2 Amp	1630	2320	2 Amp	5520	6560
3 Amp	2000	2720	3 Amp	6720	7920
4 Amp	3200	4000	4 Amp	10400	12080
5 Amp	3360	4160	5 Amp	10960	12640
6 Amp	3850	4500	6 Amp	12400	14000
8 Amp	4240	5040	8 Amp	13440	15120
10 Amp	4560	5360	10 Amp	14480	16160
15 Amp	7300	8400	15 Amp	22560	25600
20 Amp	8000	9040	20 Amp	25200	28240

SANJAY
electrical

House of Switchgear, Control Panel Accessories, Wires & Cables

Pittale Apartment, First Floor, 527 Budhwar Peth, Tapkir Galli, Pune - 411002.

☎ : 24456774, 24491816, 24489774, 66029641 / 642.

Email : sanjyelectricals@rediffmail.com

sanjayelt@gmail.com

<http://www.sanjyelectricals.com>

OFFICE HOURS : 9-30 A.M. TO 2.00 P.M. & 2.30 P.M. TO 7.30 P.M.

TERMS & CONDITIONS :

- PRICES ARE SUBJECT TO CHANGE WITHOUT ANY PRIOR NOTICE.
- THE PRICES ARE EXCLUSIVE OF STATE / LOCAL TAXES, OCTROI, SURCHARGES ETC.
- VALUE ADDED TAX (VAT) EXTRA AS APPLICABLE
- THIS PRICE LIST CANCELS ALL OUR PREVIOUS PRICE LISTS.
- SUBJECT TO PUNE JURISDICTION ONLY.